

Young's Piece ~ Pontesbury

4 Young's Way (Plot 1)
3 Bedroom Detached Home

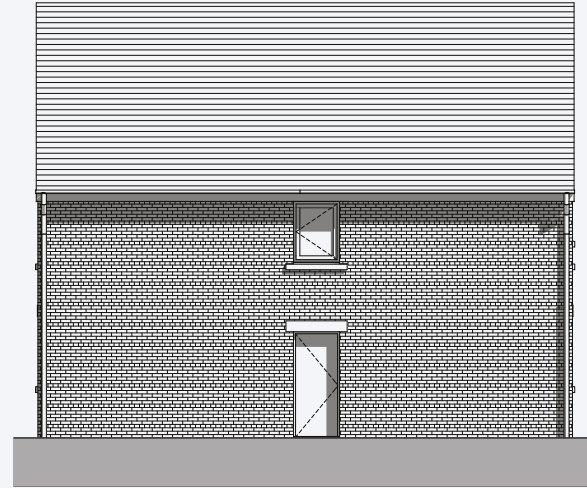


SOLD (STC)

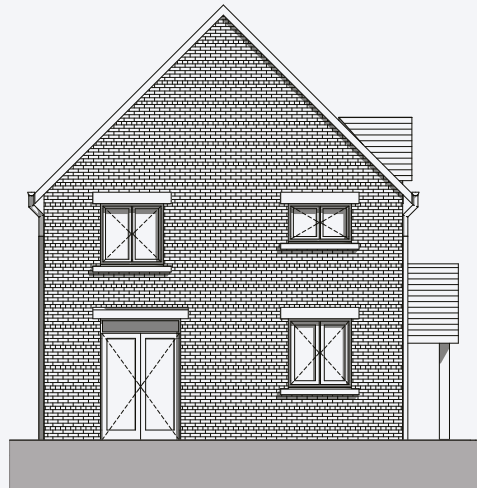
4 Young's Way (Plot 1)
3 Bedroom Detached Home



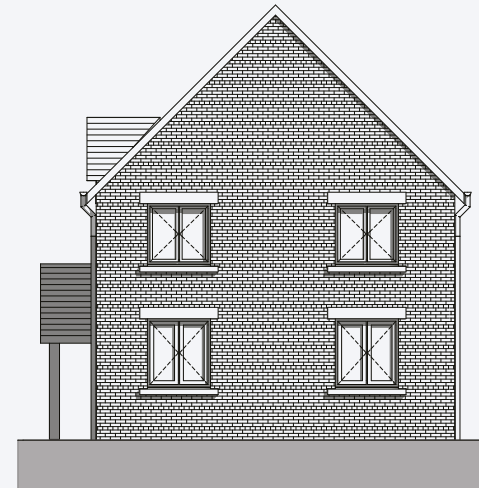
Front - North Elevation



Rear - South Elevation

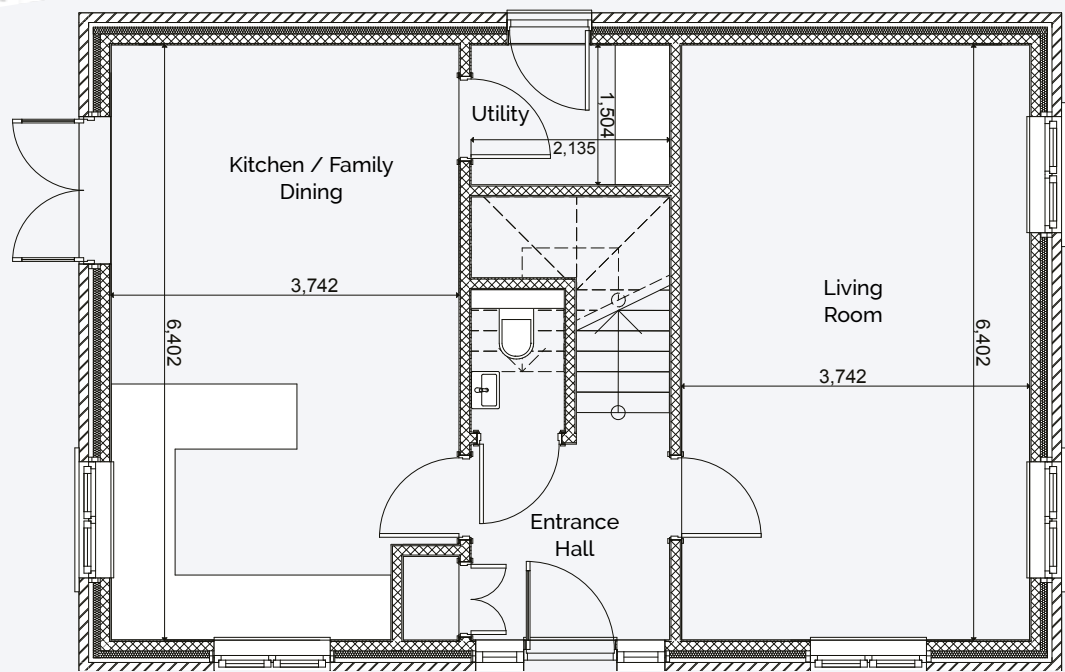
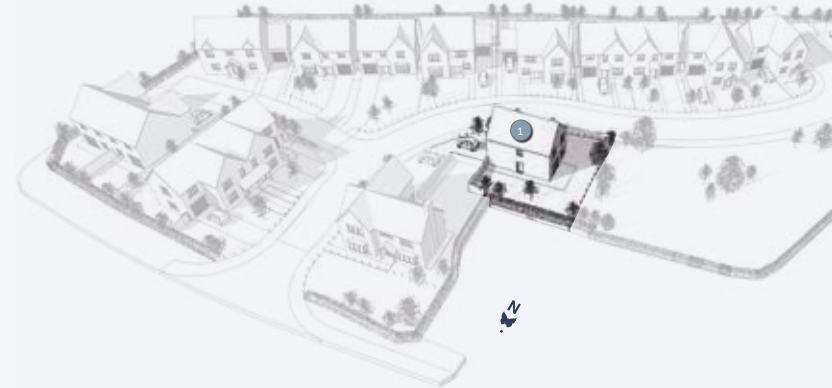


East Elevation

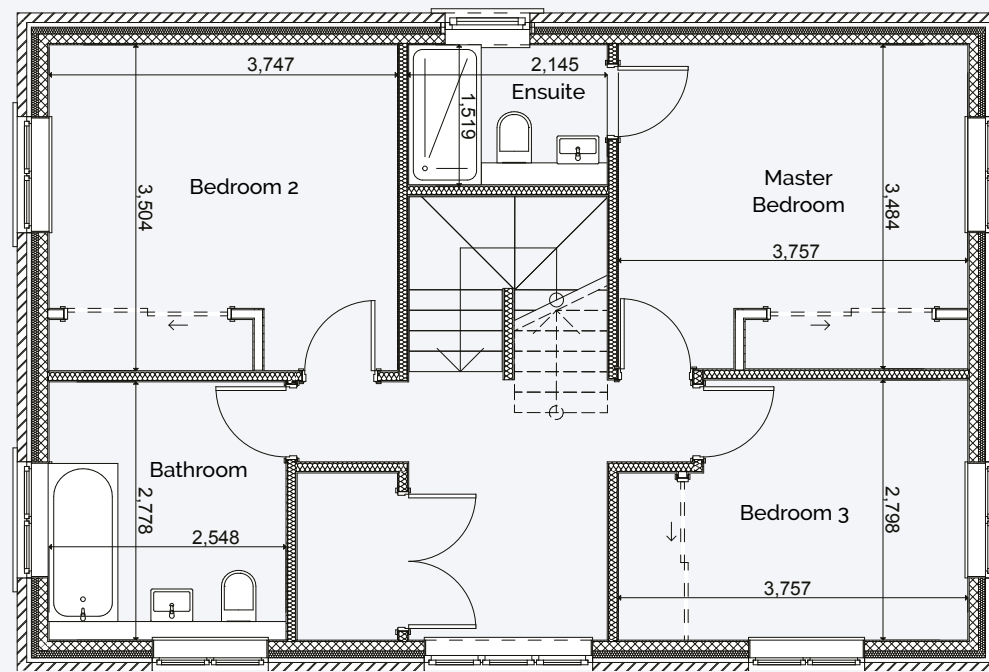


West Elevation

SOLD (STC)



Ground Floor



First Floor

Living Room	6.4m x 3.7m	21' x 21"
Kitchen/Family Dining	6.4m x 3.7m	21' x 21"
Utility	2.1m x 1.5m	6'9" x 4'9"

Master Bedroom	3.7m x 3.4m	12'4" x 11'1"
Ensuite 1	2.1m x 1.5m	6'9" x 4'9"
Bedroom 2	3.7m x 3.5m	11'8" x 9'1"
Bedroom 3	3.7m x 2.7m	11'8" x 9'1"
Family Bathroom	2.7m x 2.5m	8'8" x 8'2"

SOLD (STC)

4 Young's Way (Plot 1)
3 Bedroom Detached Home

PICARDY
HOMES

Illustration only. All details intended as a guide only & may be subject to change.



Young's Piece

4 Young's Way (Plot 1)
3 Bedroom Detached Home

PICARDY
HOMES

picardy-homes.co.uk

[@picardy_homes](#) [@picardyhomes](#) [@picardyhomes](#)

Illustration only. All details intended as a guide only & may be subject to change.