

Young's Piece ~ Pontesbury

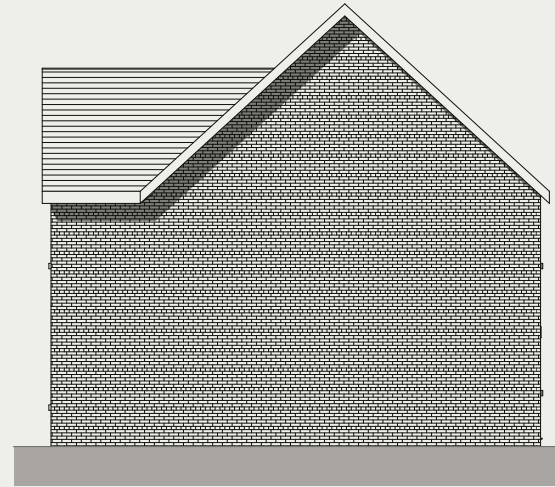
3 Parry Drive (Plot 6) ~ For Sale
3 Bedroom Semi-Detached Home



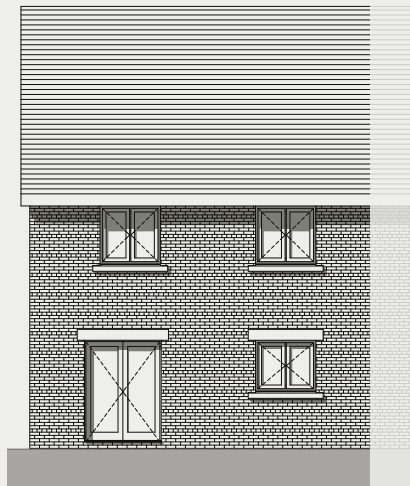
3 Parry Drive (Plot 6)
3 Bedroom Semi-Detached Home



Front - North Elevation

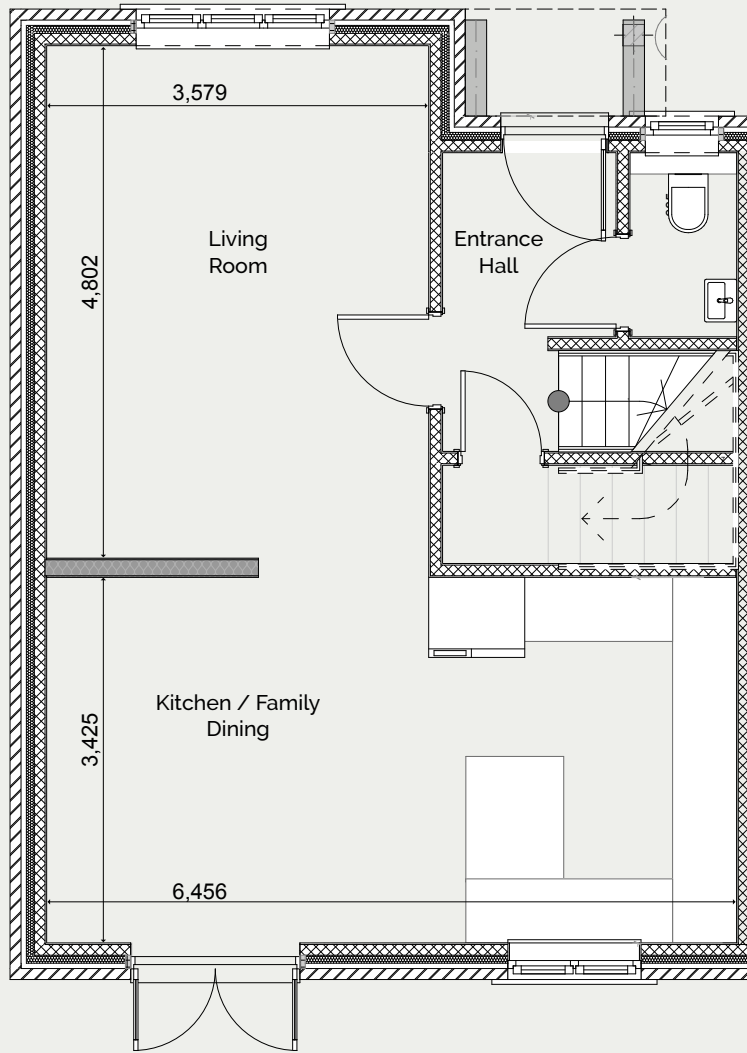


East Elevation

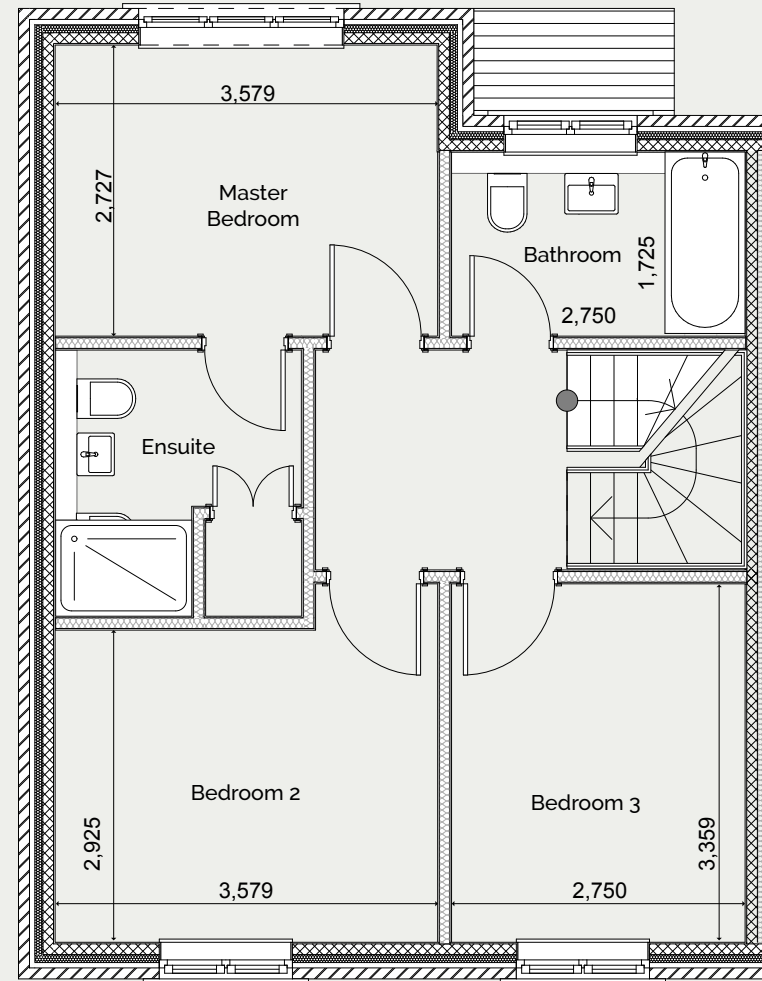


Rear - South Elevation





Ground Floor



First Floor

Living Room	4.8m x 3.6m	15'7" x 11'8"
Kitchen/Family Dining	6.5m x 3.4m	21'3" x 11'1"

Master Bedroom	3.6m x 2.7m	11'8" x 8'8"
Ensuite		
Bedroom 2	3.6m x 2.9m	11'8" x 9'5"
Bedroom 3	3.3m x 2.7m	10'8" x 8'8"
Family Bathroom	2.7m x 1.7m	8'8" x 5'6"

3 Parry Drive (Plot 6)
3 Bedroom
Semi-Detached Home

PICARDY
HOMES

Illustration only.
All details intended as a guide only, may be subject to change.



3 Parry Drive (Plot 6)
3 Bedroom Semi-Detached Home

PICARDY
HOMES

picardy-homes.co.uk

[@picardy_homes](https://www.instagram.com/picardy_homes) [@picardyhomes](https://www.facebook.com/picardyhomes) [@picardyhomes](https://www.twitter.com/picardyhomes)

Illustration only. All details intended as a guide only & may be subject to change.