

Young's Piece ~ Pontesbury

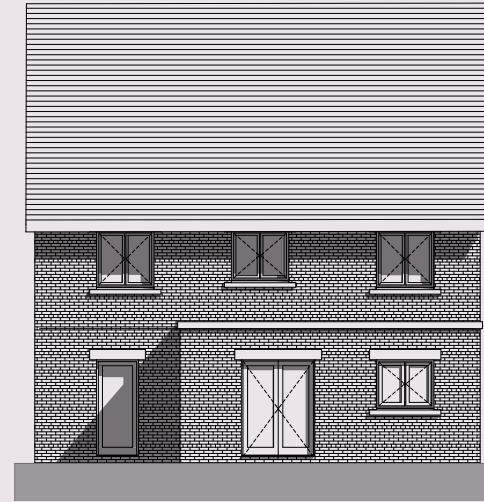
2 Parry Drive (Plot 9) ~ For Sale
4 Bedroom Detached Home



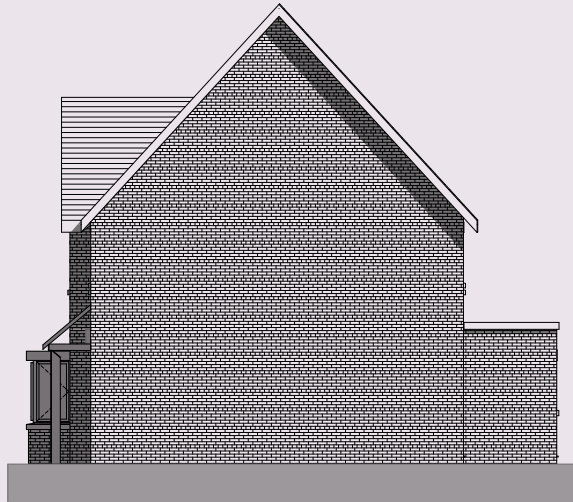
2 Parry Drive (Plot 9)
4 Bedroom Detached Home



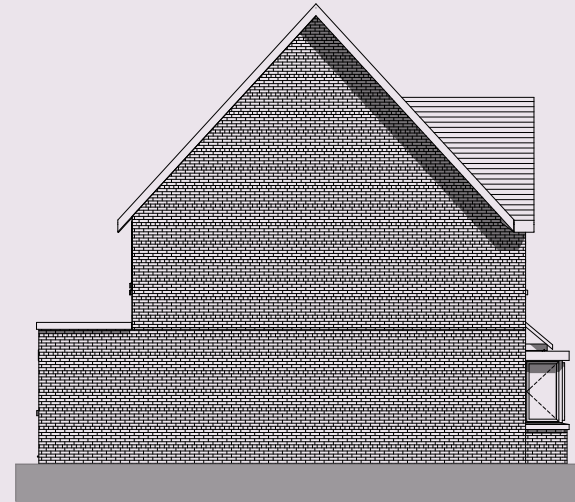
Front - South East Elevation



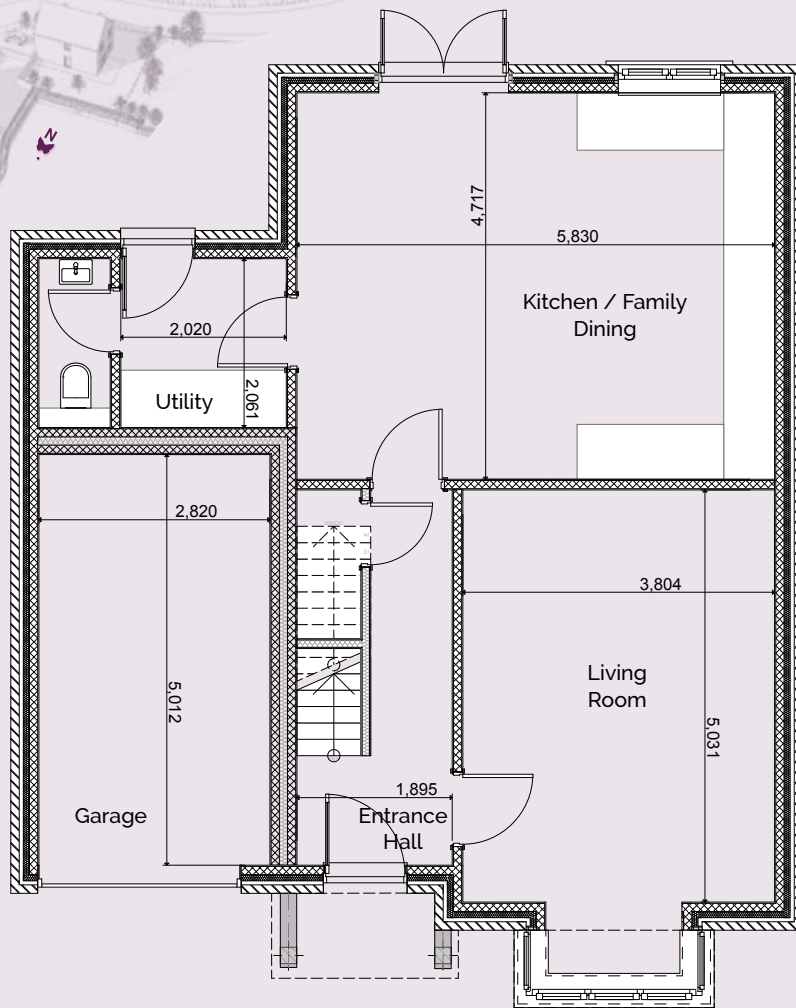
Rear - North West Elevation



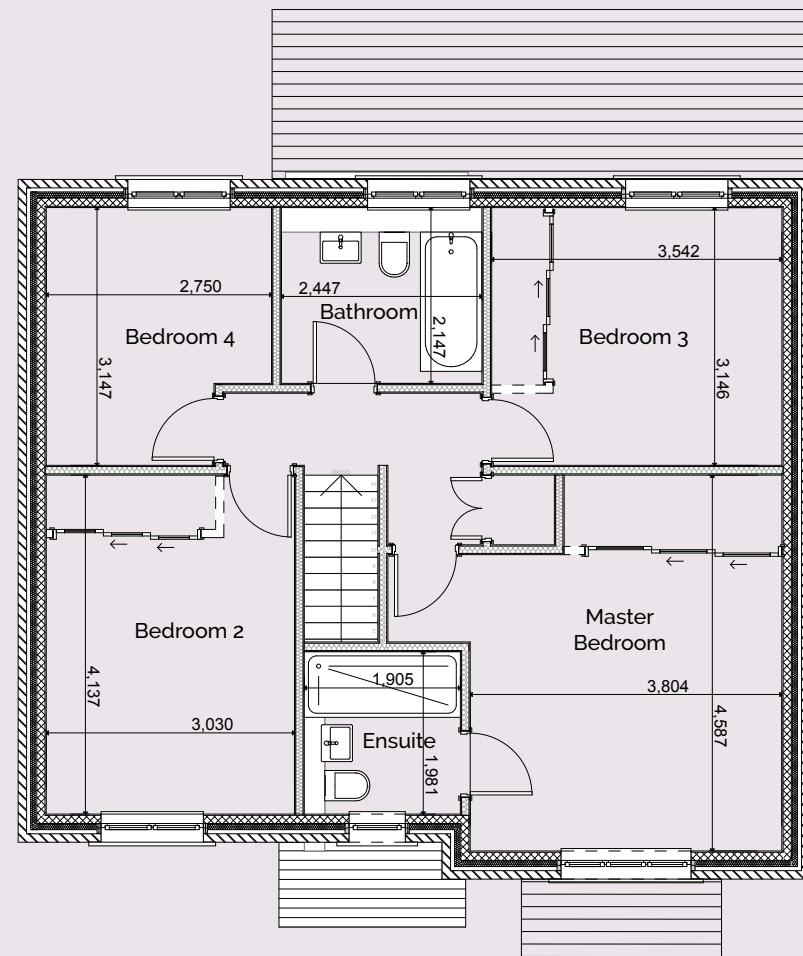
North East Elevation



South West Elevation



Ground Floor



First Floor

Kitchen/Family Dining	5.8m x 4.7m	19' x 15'4"
Living Room	5m x 3.8m	16'4" x 12'5"
Utility	2m x 2m	6'6" x 6'6"
Garage	5m x 2.8m	16'4" x 9'2"

Master Bedroom	4.6m x 3.8m	15' x 12'5"
Ensuite	2m x 1.9m	6'6" x 6'2"
Bedroom 2	4.1m x 3m	13'5" x 9'8"
Bedroom 3	3.5m x 3.1m	11'5" x 10'2"
Bedroom 4	3.1m x 2.7m	10'2" x 8'9"
Family Bathroom	2.4m x 2.1m	7'9" x 6'9"

2 Parry Drive (Plot 9)
4 Bedroom
Detached Home

PICARDY
HOMES

Illustration only.
All details intended as a guide only, may be subject to change.



Young's Piece

2 Parry Drive (Plot 9)
4 Bedroom Detached Home

PICARDY
HOMES

picardy-homes.co.uk

[@picardy_homes](https://www.instagram.com/picardy_homes) [@picardyhomes](https://www.facebook.com/picardyhomes) [@picardyhomes](https://www.twitter.com/picardyhomes)

Illustration only. All details intended as a guide only & may be subject to change.