

Young's Piece ~ Pontesbury

6 Parry Drive (Plot 7)
4 Bedroom Detached Home



RESERVED

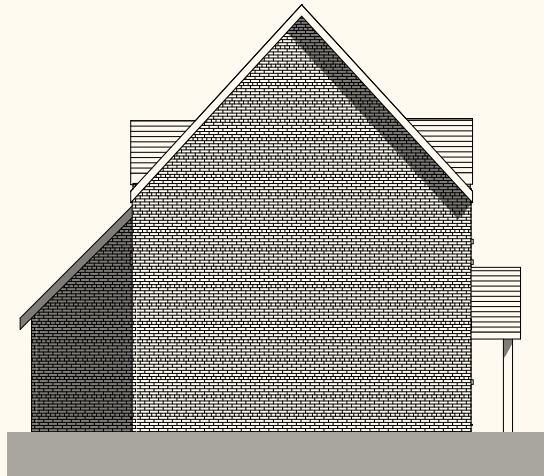
6 Parry Drive (Plot 7)
4 Bedroom Detached Home



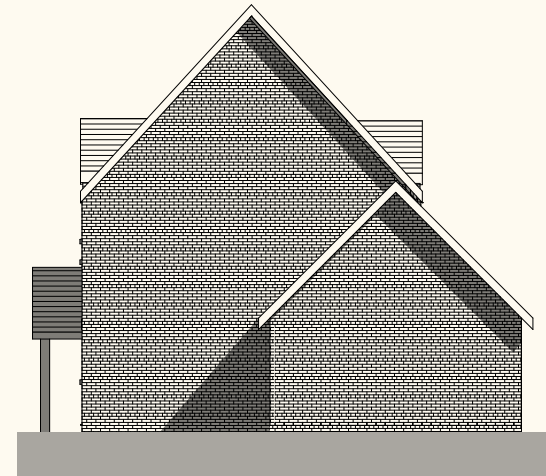
Front - South East Elevation



Rear - North West Elevation

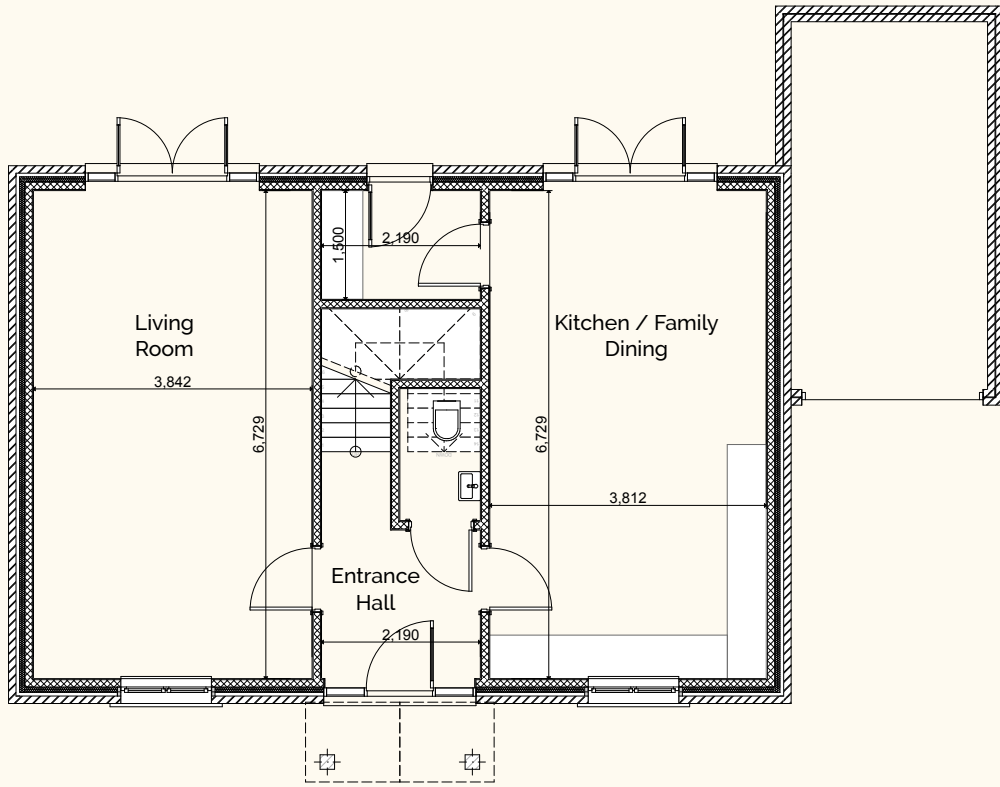


North Elevation

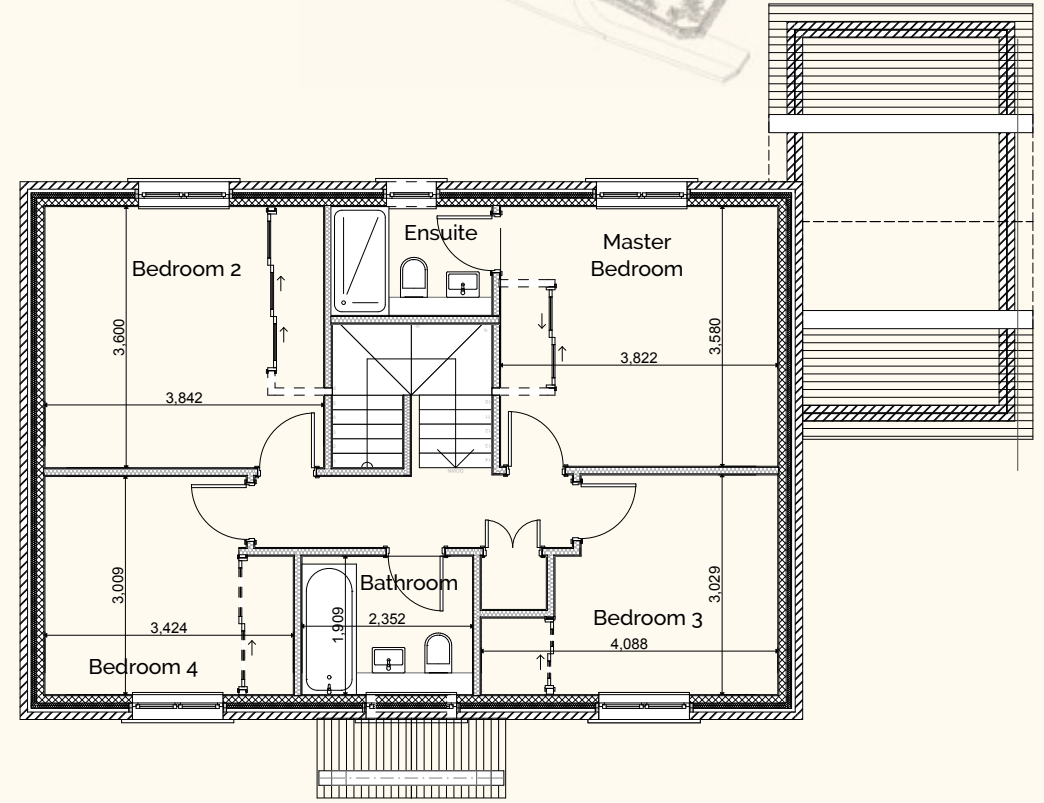


South West Elevation

RESERVED



Ground Floor



First Floor

Living Room	6.7m x 3.8m	22' x 12'5"
Kitchen/Family Dining	6.7m x 3.8m	22' x 12'5"

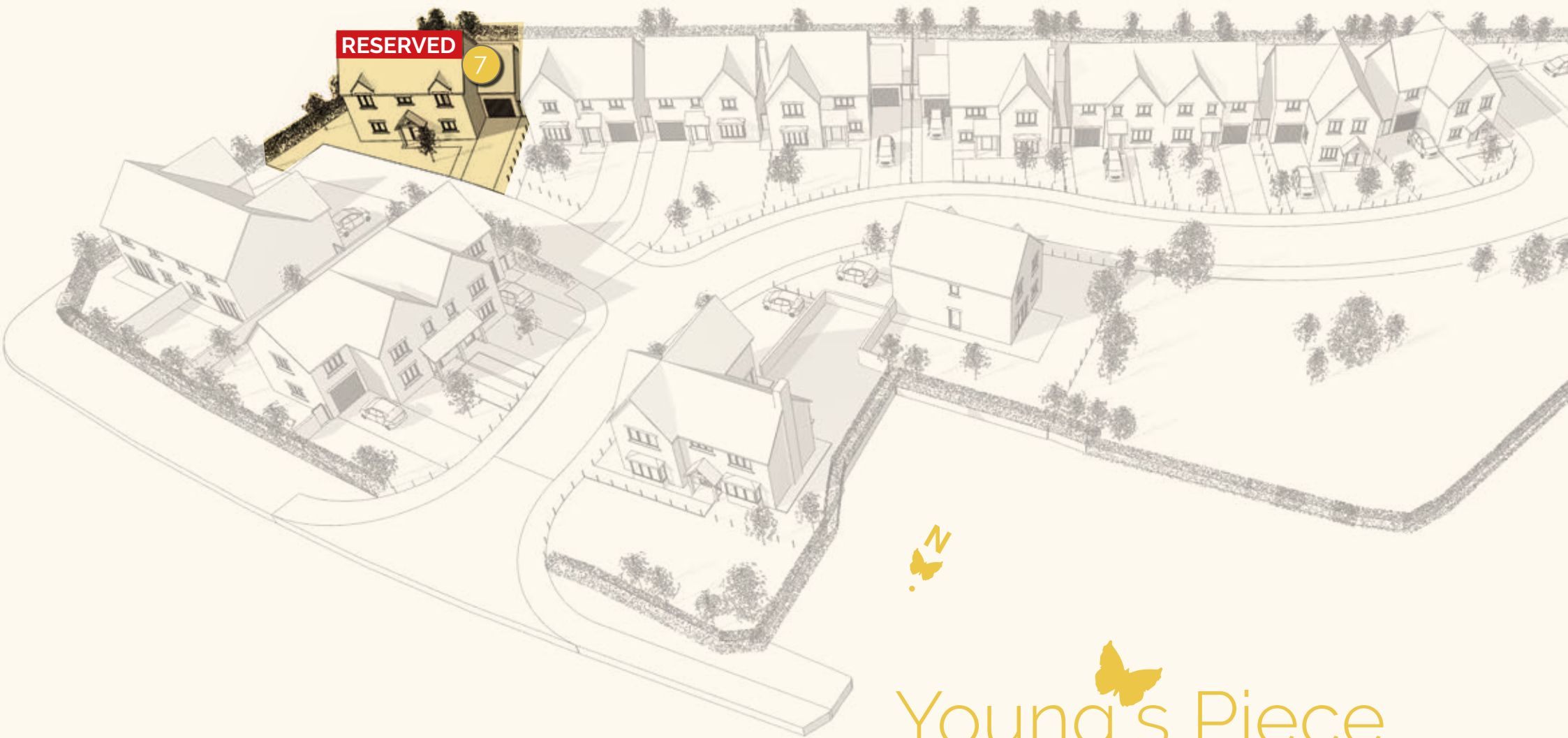
Master Bedroom	3.8m x 3.6m	12'5" x 11'8"
Ensuite		
Bedroom 2	3.8m x 3.6m	12'5" x 11'8"
Bedroom 3	4m x 3m	13'1" x 9'8"
Bedroom 4	3.4m x 3m	11'1" x 9'8"
Family Bathroom	2.3m x 1.9m	7'5" x 6'2"

RESERVED

6 Parry Drive (Plot 7)
4 Bedroom
Detached Home

PICARDY
HOMES

Illustration only.
All details intended as a guide only, may be subject to change.



Young's Piece

6 Parry Drive (Plot 7)
4 Bedroom Detached Home

PICARDY
HOMES

picardy-homes.co.uk

[@picardy_homes](https://www.instagram.com/picardy_homes) [@picardyhomes](https://www.facebook.com/picardyhomes) [@picardyhomes](https://www.twitter.com/picardyhomes)

Illustration only. All details intended as a guide only & may be subject to change.