

# Young's Piece ~ Pontesbury

15 Young's Way (Plot 15)  
3 Bedroom Detached Home

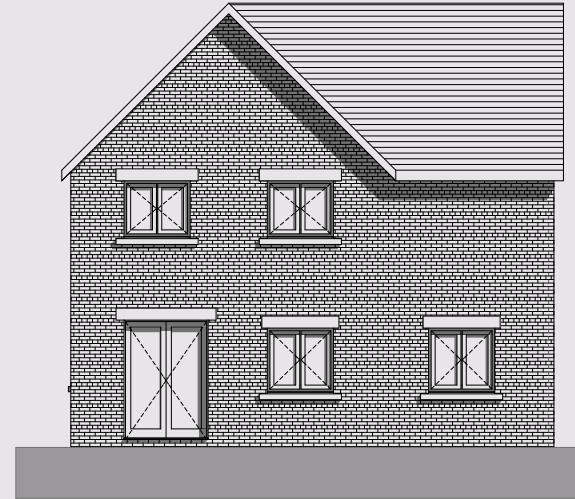


SOLD (STC)

15 Young's Way (Plot 15)  
3 Bedroom Detached Home



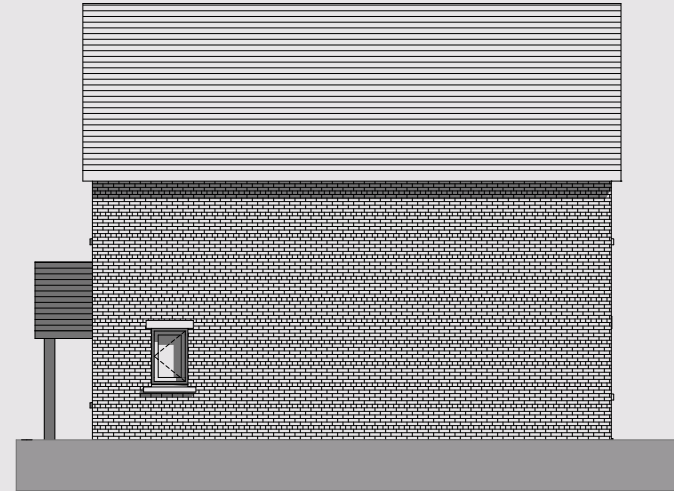
Front - South East Elevation



Rear - North West Elevation

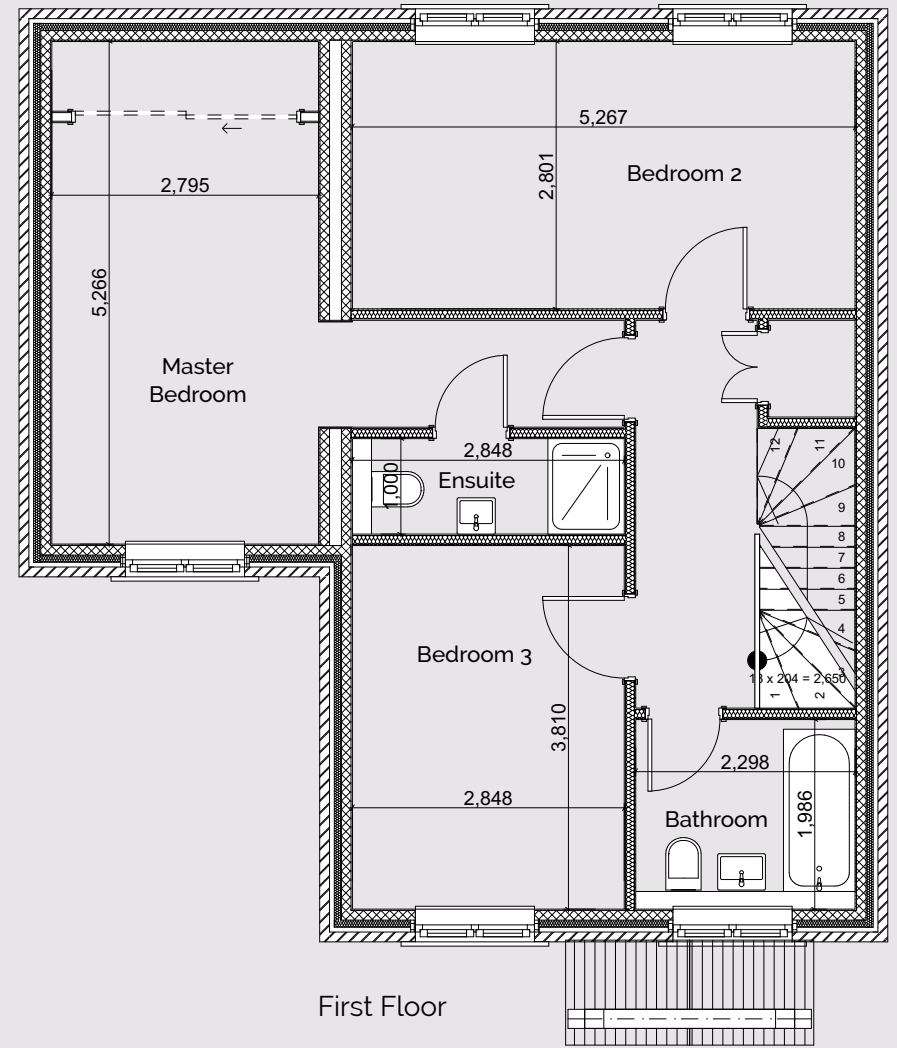
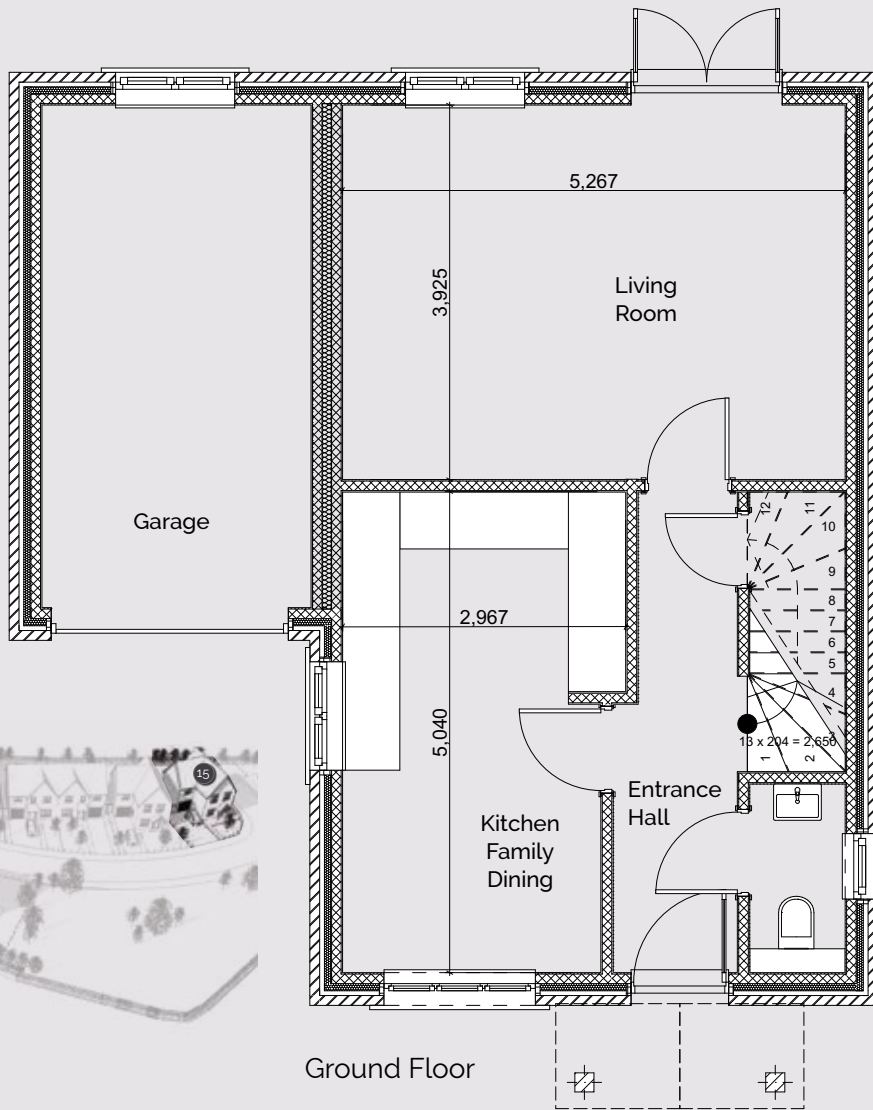


South West Elevation



North East Elevation

SOLD (STC)



Living Room	5.2m x 3.9m	17' x 12'8"
Kitchen/Family Dining	5m x 3m	16'4" x 9'8"

Master Bedroom	5.2m x 2.7m	17' x 8'8"
Ensuite	2.8m x 1m	9'1" x 3'3"
Bedroom 2	5.2m x 2.8m	17' x 9'2"
Bedroom 3	3.8m x 2.8m	12'4" x 9'2"
Family Bathroom	2.2m x 1.9m	7'2" x 6'2"

**SOLD (STC)**

15 Young's Way (Plot 15)  
3 Bedroom Detached Home

**PICARDY**  
HOMES

Illustration only.  
All details intended as a guide only, may be subject to change.



15 Young's Way (Plot 15)  
3 Bedroom Detached Home

**PICARDY**  
HOMES

[picardy-homes.co.uk](http://picardy-homes.co.uk)

[@picardy\\_homes](https://www.instagram.com/picardy_homes) [@picardyhomes](https://www.facebook.com/picardyhomes) [@picardyhomes](https://www.twitter.com/picardyhomes)

Illustration only. All details intended as a guide only & may be subject to change.