

Young's Piece ~ Pontesbury

1 Young's Way (Plot 3)
3 Bedroom Semi-Detached Home

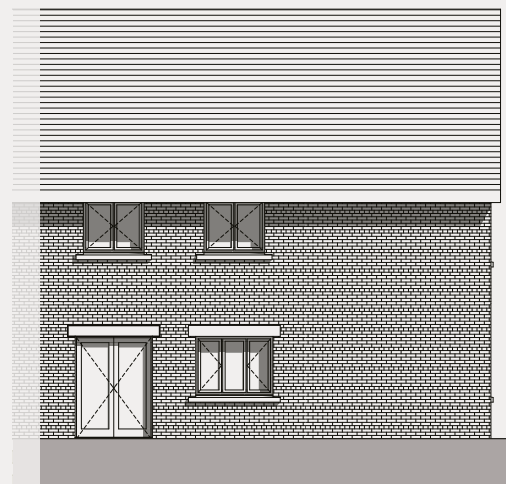


RESERVED

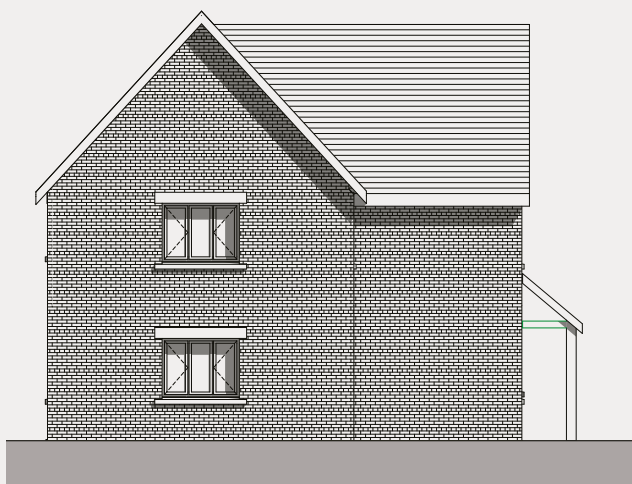
1 Young's Way (Plot 3)
3 Bedroom Semi-Detached Home



Front - East Elevation



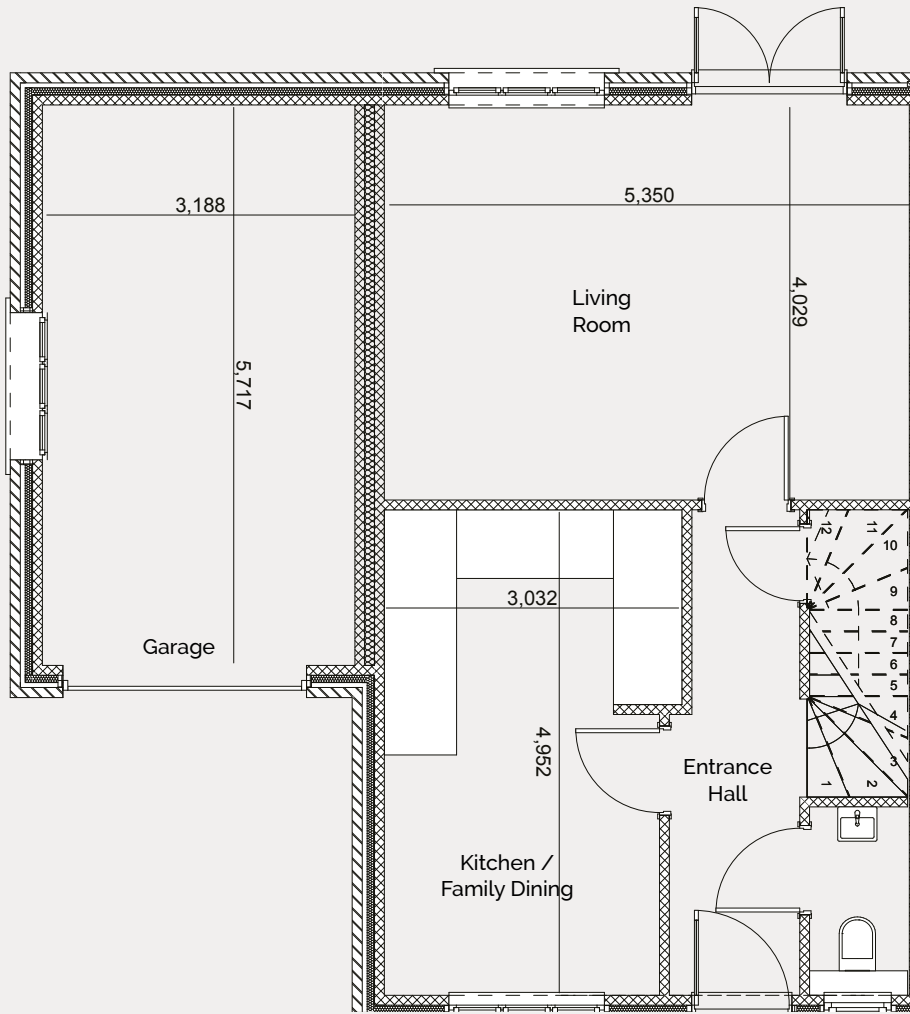
Rear - West Elevation



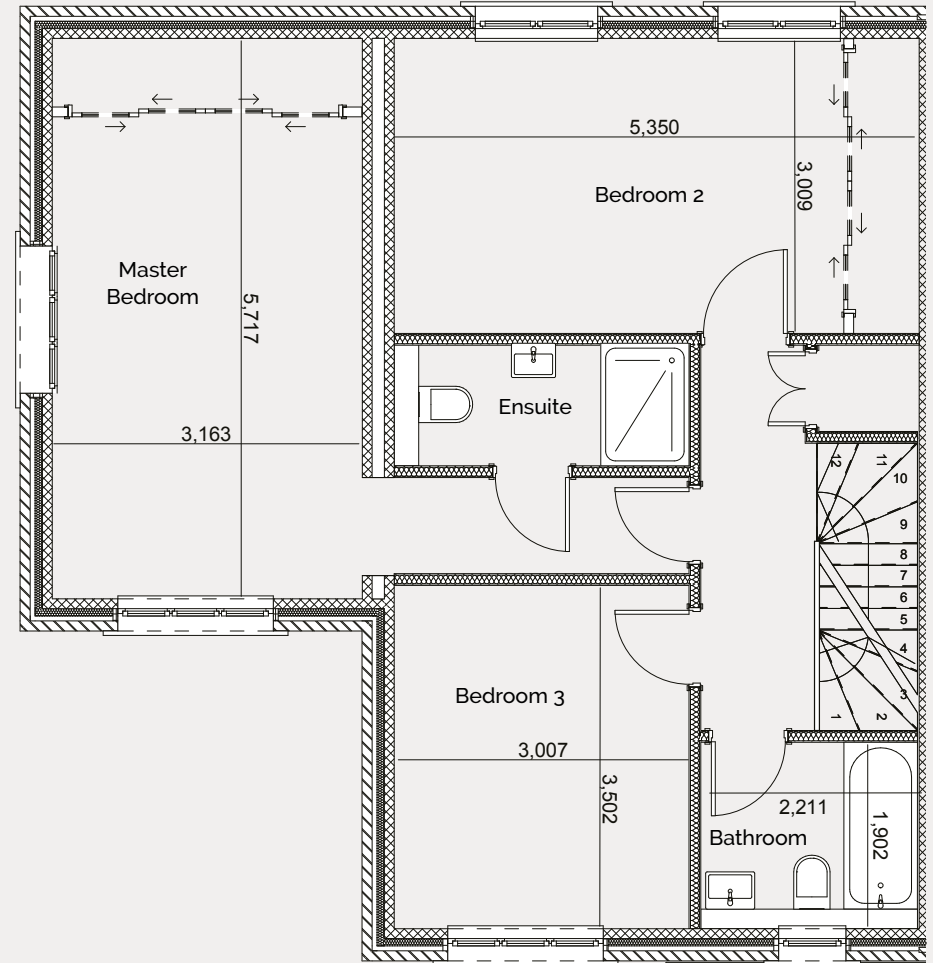
South Elevation



RESERVED



Ground Floor



First Floor

Living Room	5.3m x 4m	17'4" x 13'1"
Kitchen/Family Dining	4.9m x 3m	16' x 9'8"
Garage	5.7m x 3.1m	18'7" x 10'1"

Master Bedroom	5.7m x 3.1m	18'7" x 10'1"
Ensuite	3m x	9'8" x
Bedroom 2	5.3m x 3m	17'4" x 9'8"
Bedroom 3	3.5m x 3m	11'5" x 9'8"
Family Bathroom	2.2m x 1.9m	7'2" x 6'2"

RESERVED
 1 Young's Way (Plot 3)
 3 Bedroom
 Semi-Detached Home

PICARDY
 HOMES

Illustration only. All details intended as a guide only & may be subject to change.



1 Young's Way (Plot 3)
3 Bedroom Semi-Detached Home

PICARDY
HOMES

picardy-homes.co.uk

 [picardy_homes](https://www.instagram.com/picardy_homes)  [@picardyhomes](https://www.facebook.com/picardyhomes)  [@picardyhomes](https://www.twitter.com/picardyhomes)

Illustration only. All details intended as a guide only & may be subject to change.