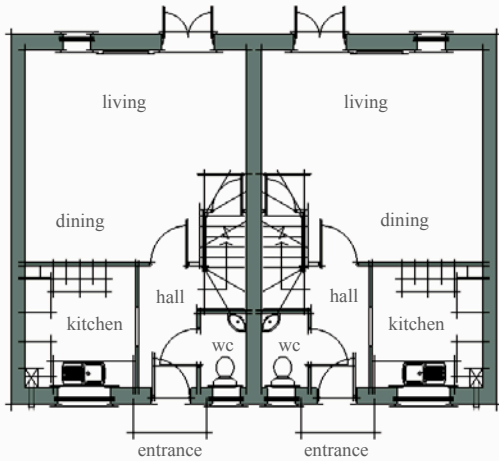


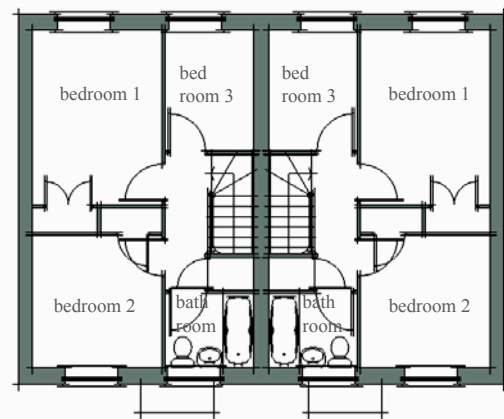
The
MALVERN



Ground Floor

Dining / Living - 5.0m x 4.8m
Kitchen - 2.5m x 2.77m

Area - 23.0m²
Area - 7.00m²



First Floor

Bedroom 1 - 2.95m x 3.96m
Bedroom 2 - 3.0m x 2.95m
Bedroom 3 - 2.0m x 2.73m

Area - 11.7m²
Area - 8.80m²
Area - 5.40m²

Note - Dimensions shown are maximum O/A